



**FORENSIC APPLICATIONS CONSULTING TECHNOLOGIES, INC.**

**Preliminary Assessment  
and  
Decision Statement  
of an  
Identified Illegal Drug Laboratory  
1491 Clinton Street, Aurora, Colorado**

Prepared for:

Steven Johnston  
1895 Alpine Ave., Suite I-26  
Boulder, CO 80304

Prepared by:

**FORENSIC APPLICATIONS CONSULTING TECHNOLOGIES, INC.**  
185 Bounty Hunter's Lane  
Bailey, CO 80421



September 4, 2007

## TABLE OF CONTENTS

EXECUTIVE SUMMARY .....	3
BACKGROUND .....	4
REGULATORY REQUIREMENTS.....	4
Federal Requirements .....	4
State Requirements .....	5
PRELIMINARY ASSESSMENT.....	5
Elements of the Preliminary Assessment.....	6
Review of Law Enforcement Documentation.....	7
County.....	7
Governing Body.....	7
Visual Inspection of the Property .....	7
Sample Collection.....	9
Identification of Cook/Storage Areas .....	14
FUNCTIONAL SPACE SUMMARY .....	14
Structure Number 1- Residence.....	15
Functional Space 1: Covered Porch.....	15
Functional Space 2: Living room, Dining room and closet, Master Bedroom and closet.....	15
Functional Space 3: Master Bathroom.....	15
Functional Space 4: Kitchen.....	15
Functional Space 5: South West Bedroom .....	15
Functional Space 6: Toilet room.....	16
Functional Space 7: Mud Room .....	16
Functional Space 8: Basement.....	16
Functional Space 9: Attic.....	16
Exterior Grounds.....	16
Furnace.....	16
Exterior Buildings.....	17
Structure Number 2 Garage .....	18
Functional Space 1 .....	18
CONCLUSIONS.....	18
RECOMMENDATIONS.....	19
Appendix A Supporting Documents and Signature Sheet	
Appendix B Field Sampling Forms and Laboratory Reports	
Appendix C Compact Digital Disc	



## EXECUTIVE SUMMARY

On August 15, 2007, Forensic Applications Consulting Technologies, Inc. (FACTs) was contracted by Mr. Steven Johnston, to perform a standard property evaluation for the presence of methamphetamine pursuant to the intent of Colorado's Real Estate methamphetamine disclosure and testing statute as described by CRS §38-35.7-103(2)(a) at 1491 Clinton Street, Aurora, Colorado. Mr. Steven Johnston is the Owner of Record of 1491 Clinton Street, Aurora, Colorado (public records show "Johnson"). The analysis results confirmed the presence of methamphetamine at the residence, and indicated the contamination may have been marginal although widespread.

Pursuant to CRS §25-18.5-101, on August 23, 2007, FACTs performed a State mandatory Preliminary Assessment as defined by 6 CCR 1013-4. Pursuant to those regulations, this document serves as both the Preliminary Assessment<sup>1</sup> and the Final Report of verification sampling resulting in a Decision Statement.<sup>2</sup>

In strict adherence to State statutes and State regulations, FACTs has determined the following:

- An illegal drug lab, as that term is defined in CRS §25-18.5-101, existed at the subject property at the time of our assessment.
- A Class 1 Public Nuisance, as defined in CRS §16-13-303(1) existed at the property at the time of our assessment.
- Widespread traces of methamphetamine were confirmed to be present at the property at the time of our assessment.
- Pursuant to the state-of-knowledge toxicological risk models developed by the State of Colorado,<sup>3</sup> the concentrations of methamphetamine in the subject property were not sufficiently elevated to be considered a "contaminant" as that term is defined in 6 CCR 1014-3 (§3).

---

<sup>1</sup> The Colorado State Board Of Health Regulations Pertaining to the Cleanup of Methamphetamine Laboratories, 6-CCR 1014-3 (§4)

<sup>2</sup> Ibid. (§8)

<sup>3</sup> Hammon T, Griffin S, *Support For Selection Of A Cleanup Level For Methamphetamine At Clandestine Drug Laboratories*, Colorado Department of Public Health and Environment, February 2005



- Pursuant to 6 CCR 1014-3 (Mandatory Appendix A) FACTs hereby issues, by virtue of this document, a *Decision Statement*<sup>4</sup> affirming that:
  - a. The initial hypothesis was rejected and the initial null hypothesis was accepted (sufficient evidence existed to confirm the presence of methamphetamine).
  - b. Upon the performance of the required *Preliminary Assessment*, the second hypothesis was sequentially tested, and no support was found; the null hypothesis was accepted (the presence of trace amounts of methamphetamine notwithstanding), property was found to be compliant.
  
- Pursuant to this *Decision Statement*, FACTs recommends the property be released for immediate occupancy; no harmful chemical residues were found at concentrations that may present an immediate or long-term threat to human health and/or the environment.

## BACKGROUND

On August 15, 2007 FACTs visited the property to perform a cursory industrial hygiene assessment at the subject property. That data quality objectives of such an assessments is not to determine representative concentrations, nor to characterize degree and/or extent of any extant contamination, but rather to merely provide a “Yes” or “No” answer the question: “Is methamphetamine present at the property?”

A single five part composite sample was collected from various locations at the residence. The composite sample conclusively confirmed the presence of methamphetamine at the property. Based on the information thus gained, the property was “discovered” and the Property Owner was given “notice” as those terms are found in 6-CCR-1014-3.

As a result of the cursory assessment, a Preliminary Assessment was required, and presented here.

## REGULATORY REQUIREMENTS

### ***Federal Requirements***

All work associated with this Preliminary Assessment was performed in a manner consistent with regulations promulgated by the Federal Occupational Safety and Health

---

<sup>4</sup> 6-CCR 1014-3, Appendix A: If, based on the totality of the circumstances, the consultant finds that insufficient evidence exists to support the hypothesis that any given area is non-compliant, that area shall be deemed to be compliant with section 25-18.5-103 (2), C.R.S., and shall be released. If objective sampling data indicates contamination is less than the cleanup level, that data may be used as *prima facie* evidence that insufficient evidence exists to support the hypothesis that any given area is non-compliant.



Administration (OSHA). Specifically, initial entry was made into the property pursuant to Title 29 of the Code of Federal Regulations §1910.120(c)(5).

## **State Requirements**

According to Colorado State Regulation 6-CCR 1014-3, following the “discovery” and “notification” of an illegal drug laboratory, as those terms are defined in CRS §25-18.5-101, a “Preliminary Assessment” of the property must be conducted. The Preliminary Assessment must be conducted according to specified requirements<sup>5</sup> by an authorized Industrial Hygienist as that term is defined in CRS §24-30-1402.

## **PRELIMINARY ASSESSMENT**

Pursuant to State regulations, during the Preliminary Assessment, the initial hypothesis is made that the subject area is clean and data will be collected to find support for this hypothesis. Any reliable data that disproves the hypothesis, including police records, visual clues of illegal production, any evidence of storage, or use; or documentation of drug paraphernalia being present, is considered conclusive, and compels the Industrial Hygienist to accept the null hypothesis and declare the area non-compliant.<sup>6</sup> The strength of evidence needed to reject the hypothesis is low, and is only that which would lead a reasonable person, trained in aspects of meth laboratories, to conclude the *presence* of methamphetamine, and/or its precursors as related to processing, drug use, storage, or waste products.

Sampling, if it is performed at all, is conducted in the areas with the highest probability of containing the highest possible concentrations of contaminants. According to the State regulations:<sup>7</sup>

*Identification and documentation of areas of contamination. This identification may be based on visual observation, law enforcement reports, proximity to chemical storage areas, waste disposal areas, or cooking areas, or based on professional judgment of the consultant; or the consultant may determine that assessment sampling is necessary to verify the presence or absence of contamination.*

Pursuant to the regulations, information obtained during the Preliminary Assessment and those findings enter the public domain, and are not subject to confidentiality.<sup>8</sup>

If the Industrial Hygienist performing the assessment finds *evidence* of contamination, and no Decision Statement is issued, the property owner is required to either remediate the property or demolish the property.<sup>9</sup>

---

<sup>5</sup> Section 4 of 6 CCR 1014-3

<sup>6</sup> Appendix A (mandatory) of 6 CCR 1014-3

<sup>7</sup> Section 4.6 of 6 CCR 1014-3

<sup>8</sup> Section 8.26 of 6 CCR 1014-3

<sup>9</sup> Colorado Revised Statutes §25-18.5-103



Normally, after the preliminary assessment is issued, the subject property is remediated, and an Industrial Hygienist must perform sampling to quantify the remaining contamination or verify that the remediation has reduced the contamination in the property to below statutory limits. If, based on the totality of the circumstances, the Industrial Hygienist fails to find sufficient evidence to support the second hypothesis that any given area is non-compliant, that area shall be deemed to be compliant and a Decision Statement shall be issued, releasing the property. If objective sampling data indicates contamination is below the cleanup levels, those data may be used as *prima facie* evidence that insufficient evidence exists to support the hypothesis that any given area is non-compliant.<sup>10</sup> In this case, the Preliminary Assessment lead directly to the issuing of a Decision Statement.

### Elements of the Preliminary Assessment

Specific mandatory information must be presented as part of the complete documentation. This discussion, in its totality, contains the mandatory information for a Preliminary Assessment as follows:

Form	DOCUMENT	Included
ML-1	FACTs Property description field form	<i>AL</i>
ML-2	Plumbing inspection field form (plumbing system integrity and identification of sewage disposal mechanism)	<i>AL</i>
ML-2	Ventilation inspection	<i>AL</i>
ML-3	FACTs Functional space inventory field form	<i>AL</i>
ML-4	FACTs Law Enforcement documentation field form	<i>AL</i>
ML-5	FACTs Field Observations field form	<i>AL</i>
Body of report	<del>FACTs Contamination migration field form</del>	<i>AL</i>
ML-7	FACTs ISDS field form	<i>AL</i>
Appendix C	FACTs photographs	<i>AL</i>
ML-8	FACTs photograph log sheet field form	<i>AL</i>
Body of report	FACTs Drawing of Cook area(s) field form	<i>AL</i>
Body of report	FACTs Drawing of Storage area(s) field form	<i>AL</i>
Body of report	FACTs Drawing of Waste area(s) field form	<i>AL</i>
Body of report	FACTs Drawing General site field form	<i>AL</i>
Body of report	FACTs description sampling procedures, handling, and QA/QC	<i>AL</i>
Body of report	FACTs health and safety procedures used in accordance with OSHA	<i>AL</i>
Body of report	FACTs Analytical Laboratory Documentation Form	<i>AL</i>
ML-14	FACTs Certification of procedures, results, and variations from standard practices. (Signature page)	<i>AL</i>
Appendix A	FACTs SOQs	<i>AL</i>
Appendix B	FACTs Analytical Laboratory Reports	<i>AL</i>
Appendix A	Available Law Enforcement documents	<i>AL</i>
Appendix B	FACTs Field Data Sheets	<i>AL</i>
Appendix C	A description of the analytical methods used and laboratory QA/QC requirements.	<i>AL</i>

**Table 1  
Inventory of Mandatory Information**

<sup>10</sup> No guarantee is ever made or implied that the property is completely free of contamination. Rather, a reasonable, standardized approach to decontamination is executed.



Included with this discussion is a read-only DVD. The DVD contains mandatory information and photographs required by State regulation for a Preliminary Assessment. Also included, is all pertinent documentation associated with the assessment. This Preliminary Assessment is not complete without the DVD and all associated support documents.

## **Review of Law Enforcement Documentation**

As part of the Preliminary Assessment, FACTs is required by regulation<sup>11</sup> to review available law enforcement documents pertinent to a subject property. During this project, the Aurora Police Department exhibited the highest level of professionalism and cooperated fully with our Preliminary Assessment. However, very little documentation was available for the property vis-à-vis controlled substances. Nevertheless, we contacted confidential sources at the Aurora PD for additional information. None of our sources were able to provide any additional information for the property.

Based on our conversations with members of the Aurora Police Department, and based on the sample results, and the observed distribution of measured methamphetamine, we believe the methamphetamine observed at the subject property was due exclusively to smoking of methamphetamine in the property. We believe the evidence *suggests* methamphetamine was smoked in the kitchen and in the basement, and was only smoked on very few occasions (possibly one occasion), and was probably smoked in the summer months.

## **County**

### **Governing Body**

Based on the best information available, the Tri-County Health Department is the “Governing Body” as defined in CRS §25-18.5-101. Based on the best information available, the Governing Body has established binding regulations that impose requirements in addition to those required by State regulations and State statutes.

### **Visual Inspection of the Property**

As part of our Preliminary Assessment, on April 23, 2007, FACTs performed a visual inspection of the subject property. Pursuant to regulatory requirements, the subject property was assigned into “functional spaces,” and an indicia inventory and assessment was performed for each functional space.

In general, upon our August 23, 2007 arrival, we found the property had been disturbed since the time of our previous visit (August 15, 2007); recent vandalism had damaged one of the back windows and the electricity meter.

The property was emptied of all chattels, furniture, and most major appliances.

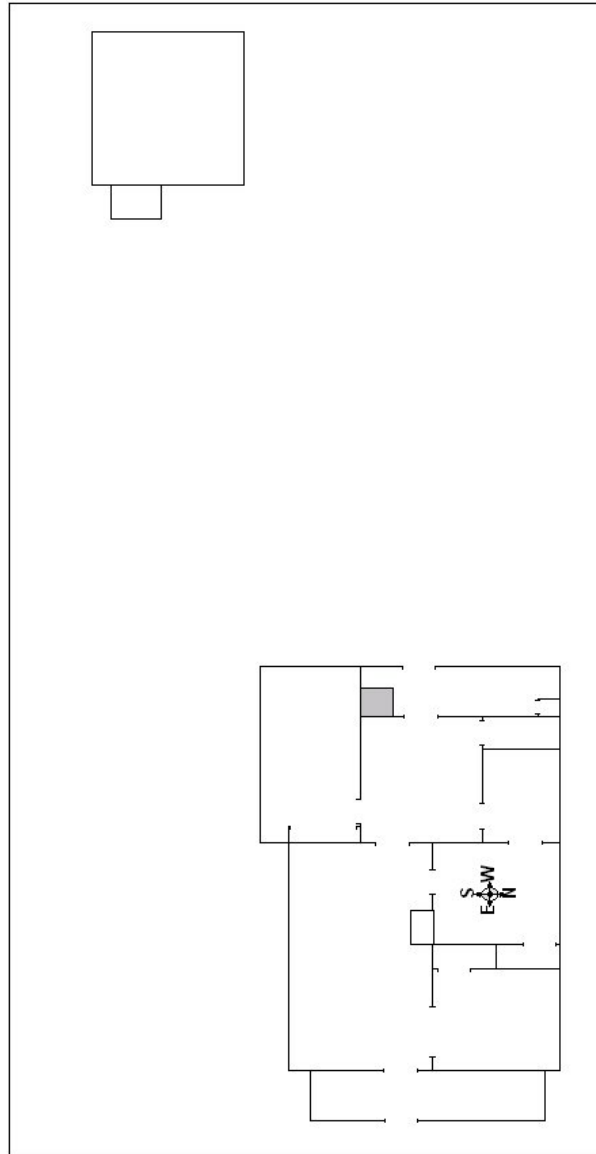
---

<sup>11</sup> 6 CCR 1014-3 (Section 4.2)



The basement was difficult to visually inspect due to the earthen embankment that surrounds the perimeter. To aid us in our visual inspection, throughout the project, we used an high-resolution digital imaging device containing a small camera fitted with an internal light source. The technology is such that the camera provides a real-time, live color video feed to an hand-held video monitor. Using the device, we were able to visually inspect hidden recesses and otherwise inaccessible areas.

There were two structures on the property which were included in this assessment. The general layout of the structures is given in the drawing below.



**Drawing 1**  
**General Building Layout**





To protect against the introduction of contaminants into the subject property, the Industrial Hygienist and his Technician donned fresh Tyvek<sup>®</sup> suits and booties upon entering the property. All equipment brought into the subject property was staged at or near the front door of each structure entered. The ladder used during our assessment had been washed at a car wash prior to entering the buildings.

## **Sample Collection**

We collected samples from the subject property in an effort to support the initial hypothesis (the residence was clean (compliant)), and, if applicable, pending sample results, to support the second hypothesis as well (that the area was not clean (noncompliant)). The samples were submitted for analysis to Analytical Chemistry Inc. in Tukwila, Washington.

## **Wipe Samples**

Wipe samples were collected in a manner consistent with State regulations. The wipe sample medium was individually wrapped commercially available Johnson & Johnson<sup>™</sup> gauze pads. Each gauze material was assigned a lot number for quality assurance and quality control (QA/QC) purposes and recorded on a log of results. Each pad was moistened with reagent grade methyl alcohol. Each batch of alcohol was assigned a lot number for QA/QC purposes and recorded on a log of results.

Consistent with State Regulations and good sampling theory, the location of the samples was based on professional judgment. In this case, it was FACTs' professional judgment that authoritative judgmental sampling would be appropriate.

The general sample location within each functional space was randomly identified by the input of an unpredictable number, whose output was a function of a simple algorithm. In this way, any and all surfaces had an equal probability of being sampled, and the Industrial Hygienist had no prior knowledge of the exact location of the sample. Once the algorithm identified the general sample location, each possible sample area was assigned a numerical value, and the final sampling location was determined by the algorithm. Each sample area was then delineated with a measured outline.

Each wipe sample was collected by methodically wiping the entire surface of the selected area with moderate pressure; first in one direction and then in the opposite direction, folding the gauze to reveal fresh material as necessary. Each sample was returned to its centrifuge tube and capped with a screw-cap.

Samples were maintained in the control of FACTs at all times, and submitted via FedEx to Analytical Chemistry, Inc. (ACI) of Tukwila, Washington. ACI is one of the laboratories identified in State regulation 6-CCR 1014-3 as being proficient in performing methamphetamine analysis.



### ***QA/QC Precautions***

The sampling media were prepared in small batches in a clean environment (FACTs Corporate Offices). The sample media were inserted into individually identified disposable plastic centrifuge tubes with caps.

### ***Field Blanks***

For QA/QC purposes, two field blanks were randomly selected from the batch, randomly inserted in the sampling sequence and submitted along with the samples for methamphetamine analysis. To ensure the integrity of the blank, FACTs personnel were unaware, until the actual time of sampling, which specific samples would be submitted as a blank. To ensure the integrity of the blanks, laboratory personnel were not informed which specific sample was a blank. The history of the FACTs field blank media has demonstrated a media and solvent contamination level below the analytical detection limit for the method, on all but one occasion (here) wherein this combined lot number contained methamphetamine at a concentration above the detection limit.

### ***Field Duplicates***

For the purposes of the data quality objectives associated with this Preliminary Assessment, no duplicates were required, and none were collected.

### ***Cross Contamination***

Prior to the collection of each specific sample area, the Industrial Hygienist donned fresh surgical gloves, to protect against the possibility of cross contamination.

### **Collection Rationale**

The samples that were collected throughout the subject property comprised of “discreet” samples. Discreet samples are collected at single isolated locations. In the following table, the Decision Threshold is that value below which the sample result would need to be to confirm compliance.

### **Sample Results**

Date	Sample ID	Location	Result Total µg	Decision Threshold	Decision Status
08/15/07	CM081507-01a	Ceiling fan in living room	0.78	Yes or No	Yes
08/15/07	CM081507-01b	Horizontal surface door jam to dining room			
08/15/07	CM081507-01c	Top of supply duct in basement			
08/15/07	CM081507-01d	Furnace interior			
08/15/07	CM081507-01e	Top of cabinet in kitchen			
08/15/07	CM081507-01	Interior composite	<0.03	No	OK
08/15/07	CM081507-02	Field blank			

The symbol “<” indicates that methamphetamine was not detected at the detection limit expressed.

**Table 2**  
**Summary of Cursory Sample Results**



Date	Sample ID	Location	Result µg/100cm <sup>2</sup>	Decision Threshold	Decision Status
08/23/07	CM082307-01	Covered Porch	0.01	0.50	PASS
08/23/07	CM082307-02	Living Functional Space	<0.01	0.50	PASS
08/23/07	CM082307-03	Master bathroom north wall	<0.01	0.50	PASS
08/23/07	CM082307-04	Kitchen south cabinet	0.01	0.50	PASS
08/23/07	CM082307-05	SW Bedroom inside closet	<0.00	0.50	PASS
08/23/07	CM082307-06	Toilet room	<0.01	0.50	PASS
08/23/07	CM082307-07	Field Blank	NA		Flagged
08/23/07	CM082307-08	Mud Room	<0.01	0.50	PASS
08/23/07	CM082307-09	Basement vertical surface of duct	0.02	0.50	PASS
08/23/07	CM082307-10	Garage shelf on west wall	<0.01	0.50	PASS
08/23/07	CM082307-11	Furnace interior	0.02	0.50	PASS

The symbol "<" indicates that methamphetamine was not detected at the detection limit expressed.

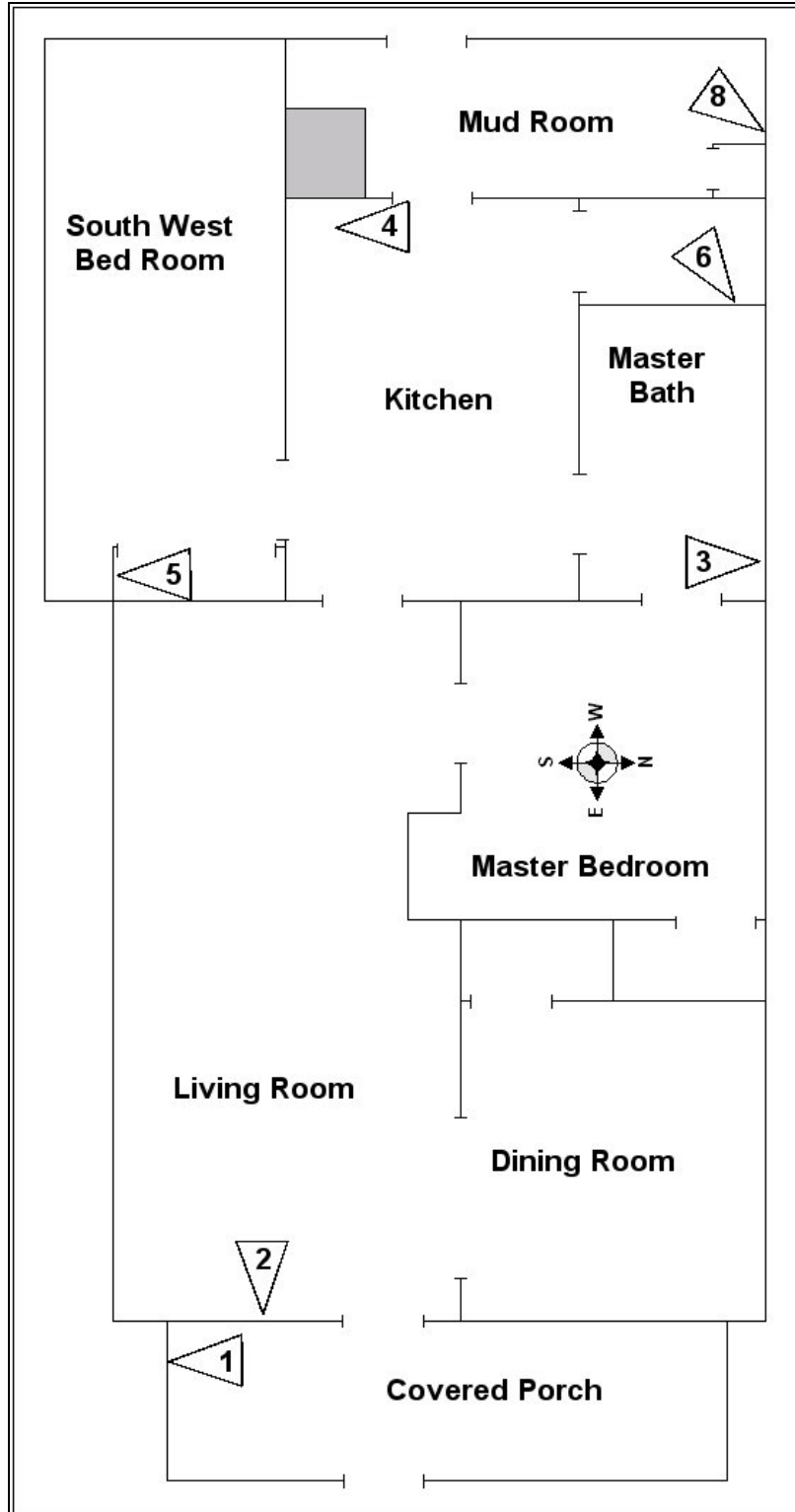
### **Table 3 Summary of Final Sample Results**

Taken *in toto* the results demonstrate compliance with pertinent regulations.

#### **Sample Locations**

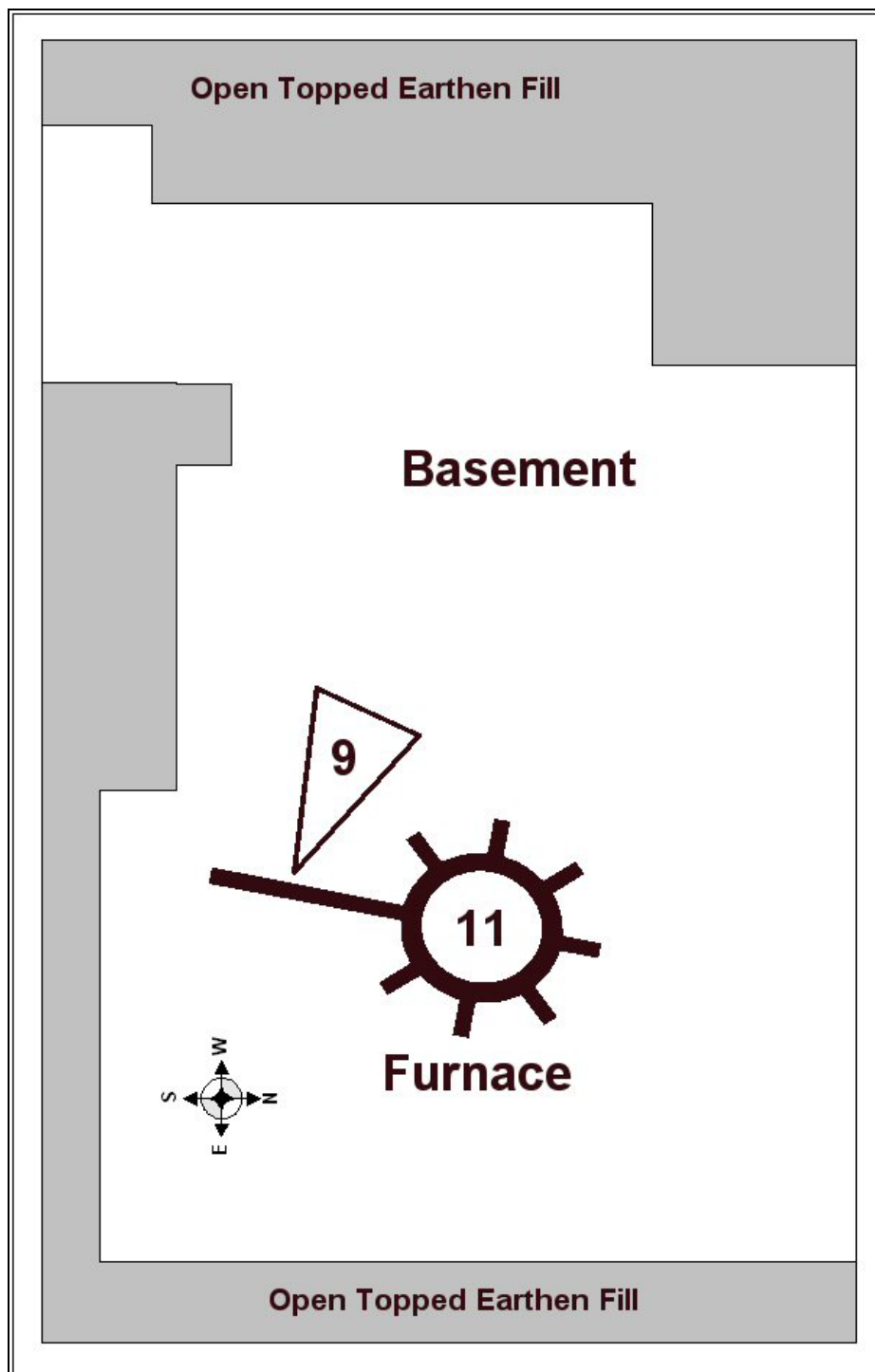
In the figures that follow, the sample locations from the Preliminary Assessment have been presented. For clarity, the initial cursory sample locations are not been depicted, and are not required by regulation. The drawings are stylized and not to scale.





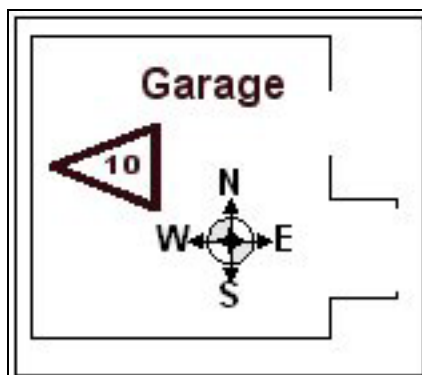
**Figure 2**  
**Sampling Locations on First Floor**





**Figure 3**  
**Sampling Locations in Basement**





**Figure 4**  
**Sampling Locations in Garage**

### **Quality Assurance/Quality Control**

The following section is required by regulation and is not intended to be understood by the casual reader. All abbreviations are standard laboratory use. MDL was 0.004 µg; LOQ was 0.03 µg; MBX <MDL; LCS .10 µg (RPD 2%, recovery =98%); Matrix spike 0.020 µg (RPD 0%; recovery 100%); Matrix spike Dup 0.020 µg; (RPD 10%; recovery 90%); Surrogate recovery (all samples): High 100% (Sample 11), Low 84% (Sample 10); FACTs reagents: MeOH lot #A0702 <MDL for n=4;<sup>12</sup> Gauze lot G0702 <MDL for n=1. The QA/QC indicate the data meet the data quality objectives; and the results do not appear to exhibit bias.

### **Identification of Cook/Storage Areas**

Based on the best information available, we believe that methamphetamine was not prepared and storage was restricted to casual storage on the person who used the material.

## **FUNCTIONAL SPACE SUMMARY**

During a Preliminary Assessment, the Industrial Hygienist divides an area into “functional spaces” and evaluates the potential for contamination in each area. The idea is to segment a property into specific areas which may present different potentials for contamination, based on the anticipated use, or function, conducted in that area. Thus, functions of bedrooms and bathrooms are different, kitchens and living rooms, are different, etc., and a building is divided into such areas based solely on professional judgment. The following Functional Spaces have been addressed below:

---

<sup>12</sup> Although one field blank during another, unrelated, project did exhibit a methamphetamine peak, the analyzing lab considered the peak an anomaly, and rejected the results as methamphetamine.



Structure Number	Functional Space Number	Functional space
1	1	Covered Porch
1	2	Living room, Dining room and closet, Master Bedroom and closet
1	3	Master bathroom
1	4	Kitchen
1	5	SW Bedroom
1	6	Toilet room
1	7	Mud room/ Utility room
1	8	Basement
1	9	Attic
1	10	Exterior grounds
2	1	Garage

**Table 4  
Functional Space Summary**

### ***Structure Number 1- Residence***

#### **Functional Space 1: Covered Porch**

This area is an open area surrounded by a screen and securable door. There were no visual indicators present in this area. The sample indicated concentrations that were indicative of compliance with State regulations.

#### **Functional Space 2: Living room, Dining room and closet, Master Bedroom and closet**

This functional space represents each of the contiguous carpeted areas. The areas were considered a single functional space due to the extant homogeneous area.

#### **Functional Space 3: Master Bathroom**

This area is defined as the term is commonly known. There were no visual indicators present in this area.

#### **Functional Space 4: Kitchen**

Identified as the term is commonly used. There were no visual indicators present in this area.

#### **Functional Space 5: South West Bedroom**

Although this room had the same paint and carpet as the found elsewhere in the residence, the area was not contiguous with the other carpeted areas, and therefore was identified as a separate functional space. There were no visual indicators present in this area.



## Functional Space 6: Toilet room

This area contained a toilet and a sink. There were no visual indicators present in this area.

## Functional Space 7: Mud Room

This area was a large foyer on the west side of the house which appeared to be a mud room, cloak room and utility room. We observed recent vandal activity in this room. Otherwise, there were no visual indicators present in this area.

## Functional Space 8: Basement

We did not observe any visual indicators in this area.

## Functional Space 9: Attic

The attic access door had been sealed with paint. It would appear that the attic had not been accessed for a considerable period of time. There were no visual indicators present in this area.

## Exterior Grounds

Although this area is not a functional space *per se*, for clarity and consistency, we have assigned the exterior grounds with a Functional space number. There were no visual indicators present in this area.

## Furnace

Although not a functional space *per se*, the industrial hygiene and medical communities now know that the mere use of methamphetamine in a home may result in elevated exposures to the occupants via airborne migration. When methamphetamine is smoked, between 80%<sup>13</sup> and half<sup>14</sup> of the substance is released from the user's pipe. Of that material which is inhaled, between 33%<sup>15</sup> and 10%<sup>16</sup> of the nominal dose is not absorbed

---

<sup>13</sup> Cook CE, *Pyrolytic Characteristics, Pharmacokinetics, and Bioavailability of Smoked Heroin, Cocaine, Phencyclidine, and Methamphetamine* (From: Methamphetamine Abuse: Epidemiologic Issues and Implications Research Monograph 115, 1991, U.S. Department Of Health And Human Services Public Health Service Alcohol, Drug Abuse, and Mental Health Administration National Institute on Drug Abuse)

<sup>14</sup> Cook CE, Jeffcoat AR, Hill JM, et al. *Pharmacokinetics of Methamphetamine Self-Administered to Human Subjects by Smoking S-(+)-Methamphetamine Hydrochloride*. Drug Metabolism and Disposition Vol. 21 No 4, 1993 as referenced by Martyny JW, Arbuckle SL, McCammon CS, Erb N, Methamphetamine Contamination on Environmental Surfaces Caused by Simulated Smoking of Methamphetamine (The publication of this study is currently pending. Copies of the study are available from the Colorado Alliance for Drug Endangered Children.)

<sup>15</sup> Harris DS, Boxenbaum H, Everhart ET, Sequeira G, et al, The bioavailability of intranasal and smoked methamphetamine, *Pharmacokinetics and Drug Disposition*, 2003;74:475-486.)

<sup>16</sup> Cook CE, Jeffcoat AR, Hill JM, Pugh DE, et al *Pharmacokinetics of methamphetamine self-administered to human subjects by smoking S-(+)-methamphetamine hydrochloride* Drug Metabolism and Disposition, Vol 21, No. 4, pp. 717-723, 07/01/1993





into the body (leaving the remainder airborne). Recent work conducted by Industrial Hygienists at the National Jewish Hospital<sup>17</sup> in Denver, Colorado, indicate that a single use of methamphetamine, by smoking, would result in an average residential area ambient airborne concentration of methamphetamine ranging from 35 micrograms per cubic meter ( $\mu\text{g}/\text{m}^3$ ) to over 130  $\mu\text{g}/\text{m}^3$ . These authors found that smoking methamphetamine just once in the residence can result in surfaces being contaminated with methamphetamine. The authors concluded: "If methamphetamine has been smoked in a residence, it is likely that children present in that structure will be exposed to airborne methamphetamine during the "smoke" and to surface methamphetamine after the 'smoke.'<sup>18</sup>

Since it is the purpose of the ventilation system to move air throughout the structure, we collected a sample from the furnace interior. The laboratory reported finding trace amounts of methamphetamine at a concentration of less than twice the detection limit for the analytical method. Based on our experience, when methamphetamine is used a residence with a forced air system, the furnace and interior duct work can be heavily contaminated. This sample result (CM082307-11) seems to indicate that the user of methamphetamine may have used the material during the summer months when the furnace system was not on, thus preventing the whole scale contamination of the duct interiors.

### **Exterior Buildings**

Pursuant to CRS §25-18.5-101 *Definitions* (2) "Drug laboratory" means

*"...the areas where controlled substances ... and all proximate areas that are likely to be contaminated as a result of such manufacturing, processing, cooking, disposing, or storing."*

And 6 CCR 1014-3 which states:

*§ 4.6 Identification and documentation of areas of contamination. This identification may be based on visual observation, law enforcement reports, proximity to chemical storage areas, waste disposal areas, or cooking areas...*

---

<sup>17</sup> Martyny JW, Arbuckle SL, McCammon CS, Erb N, Methamphetamine Contamination on Environmental Surfaces Caused by Simulated Smoking of Methamphetamine (The publication of this study is currently pending. Copies of the study are available from the Colorado Alliance for Drug Endangered Children.)

<sup>18</sup> Martyny JW, Arbuckle SL, McCammon CS, Erb N, Methamphetamine Contamination on Environmental Surfaces Caused by Simulated Smoking of Methamphetamine (The publication of this study is currently pending. Copies of the study are available from the Colorado Alliance for Drug Endangered Children.)



Finally, State Statute CRS §16-13-303 says:

(1) Every building or part of a building including the ground upon which it is situate and all fixtures and contents thereof, every vehicle, and any real property shall be deemed a class 1 public nuisance when: (c) (I) Used for unlawful manufacture, cultivation, growth, production, processing, sale, or distribution or for storage or possession for any unlawful manufacture, sale, or distribution of any controlled substance, or any other drug the possession of which is an offense under the laws of this state, or any imitation controlled substance, ...

Therefore, based on these requirements, we included the proximal building upon the same real property in our scope of sampling. However, in light of the fact that there was no information to suggest the out-lying structure was used for any drug related activities, we collected single discreet sample from the garage.

## **Structure Number 2 Garage**

### **Functional Space 1**

This area did not contain any visual indicators consistent with methamphetamine use, storage, possession or processing.

## **CONCLUSIONS**

Based on the totality of the circumstances, sampling, and a review of pertinent available Law Enforcement documents, our subjective observations and objective data from sampling, and in strict adherence to State statutes and State regulations, FACTs concludes the following:

- An illegal drug lab, as that term is defined in CRS §25-18.5-101, existed at the property.
- A Class 1 Public Nuisance, as defined in CRS §16-13-303(1) existed at the property.
- Widespread concentrations of trace methamphetamine were confirmed to be present at the property.
- The concentrations of methamphetamine in the subject property were not sufficiently elevated to be considered a “contaminant” as that term is defined in 6 CCR 1014-3 (§3).
- Final verification sampling indicates the property is compliant.
- FACTs hereby issues, by virtue of this document, a *Decision Statement* affirming that:
  - a. The initial hypothesis was rejected and the initial null hypothesis was accepted (sufficient evidence existed to confirm the presence of methamphetamine).



- b. Upon the performance of the required *Preliminary Assessment* the second hypothesis was contemporaneously tested, and no support was found; the null hypothesis was subsequently accepted (in the totality of the circumstances the property was found to be compliant).
- No harmful chemical residues were found at concentrations that may present an immediate or long-term threat to human health and/or the environment.
- Therefore, pursuant to this *Decision Statement*, the property is to be released for immediate occupancy without the need for any further action.

## RECOMMENDATIONS

To avail of the civil liability immunity provided by CRS §25-18.5-103(2) and to ensure complete compliance with State regulations, this Preliminary Assessment and Decision Statement must be submitted to the Governing Body with jurisdiction over the property. Based on the best information available, this documentation should be submitted to the Tri-county Health Department:

Brian Hlavacek  
Environmental Specialist  
Tri-county Health Department  
Altura Plaza (Courthouse Building)  
15400 E. 14th Place #309  
Aurora, CO 80011-5828

Although no remediation actions are required by State statutes, FACTs nevertheless recommends prudent actions be taken to mitigate even further the potential for exposure to residual methamphetamine from the ventilation system. To this end, we recommend normal duct cleaning and furnace cleaning be conducted at the subject property. The recommended cleaning is NOT mandatory.

Enclosures: One CD; Data package, and Appendices



## APPENDIX A:

### SUPPORTING DOCUMENTS

<b>Form</b>	<b>DOCUMENT</b>
ML1	FACTs Property description field form
ML2	Plumbing inspection field form (plumbing system integrity and identification of sewage disposal mechanism)
ML2	Ventilation inspection
ML3	FACTs Functional space inventory field form
ML4	FACTs Law Enforcement documentation field form
ML5	FACTs Field observations field forms
<del>ML6</del>	<del>FACTs Contamination migration field form</del>
ML7	FACTs ISDS field form
ML8	FACTs photograph log sheet field form
ML14	FACTs Certification of procedures, results, and variations from standard practices. (Signature page)
ML15	FACTs SOQs
ML 18	FACTs Field Data Sheets



## FORENSIC APPLICATIONS CONSULTING TECHNOLOGIES, INC.

### CONSULTANT STATEMENT OF QUALIFICATIONS

(as required by State Board of Health Regulations 6 CCR 1014-3 Section 8.21)

<b>FACTs project name:</b>	<b>Clinton Street</b>	<b>Form # ML15</b>
<b>Date:</b>	<b>Sept 4, 2007</b>	
<b>Reporting IH:</b>	<b>Caoimhín P. Connell, Forensic IH</b>	

Caoimhín P. Connell, is a private consulting forensic industrial hygienist meeting the definition of an "Industrial Hygienist" as that term is defined in the Colorado Revised Statutes §24-30-1402. Mr. Connell has been a practicing Industrial Hygienist in the State of Colorado since 1987 and has been involved in clandestine drug lab (including meth-lab) investigations since May of 2002.

Mr. Connell is a recognized authority in methlab operations and is a Certified Meth-Lab Safety Instructor through the Colorado Regional Community Policing Institute (Colorado Department of Public Safety, Division of Criminal Justice). Mr. Connell has provided methlab training for officers of over 25 Colorado Police agencies, 20 Sheriff's Offices, federal agents, and probation and parole officers from the 2<sup>nd</sup>, 7<sup>th</sup> and 9<sup>th</sup> Colorado judicial districts. He has provided meth-lab lectures to prestigious organizations such as the County Sheriff's of Colorado, the American Industrial Hygiene Association, and the National Safety Council.

Mr. Connell is Colorado's only private consulting industrial hygienist certified by the Office of National Drug Control Policy High Intensity Drug Trafficking Area Clandestine Drug Lab Safety Program, and P.O.S.T. certified by the Colorado Department of Law (Certification Number B-10670); he is a member of the Colorado Drug Investigators Association, and the American Industrial Hygiene Association.

He has received over 120 hours of highly specialized law-enforcement sensitive training in meth-labs and clan-labs (including manufacturing and identification of booby-traps commonly found at meth-labs) through the Iowa National Guard/Midwest Counterdrug Training Center and the Florida National Guard/Multijurisdictional Counterdrug Task Force, St. Petersburg College as well as through the U.S. Bureau of Justice Assistance (US Dept. of Justice). Additionally, he received extensive training in the Colorado Revised Statutes, including Title 18, Article 18 "Uniform Controlled Substances Act of 1992."

Mr. Connell is also a law enforcement officer in the State of Colorado, who has conducted clandestine laboratory investigations and performed risk, contamination, hazard and exposure assessments from both the law enforcement (criminal) perspective, and from the civil perspective in residences, apartments, motor vehicles, and condominiums. Mr. Connell has conducted over 50 assessments in illegal drug labs.

He has extensive experience performing assessments pursuant to the Colorado meth-lab regulation, 6 CCR 1014-3, (State Board Of Health *Regulations Pertaining to the Cleanup of Methamphetamine Laboratories*) and was an original team member on two of the legislative working-groups which wrote the regulations for the State of Colorado. Mr. Connell was the primary contributing author of Appendix A (*Sampling Methods And Procedures*) and Attachment to Appendix A (*Sampling Methods And Procedures Sampling Theory*) of the Colorado regulations. He has provided expert witness testimony in civil cases and testified before the Colorado Board of Health and Colorado Legislature Judicial Committee regarding methlab issues.

Mr. Connell, who is a committee member of the ASTM International Forensic Sciences Committee, is the sole sponsor of the draft ASTM E50 *Standard Practice for the Assessment of Contamination at Suspected Clandestine Drug Laboratories*, and he is a contributing author of a recent (2007) AIHA Publication on methlab assessment and remediation.



**FORENSIC APPLICATIONS CONSULTING TECHNOLOGIES, INC.  
CLANDESTINE METHAMPHETAMINE LABORATORY  
ASSESSMENT FIELD FORMS<sup>©</sup>**

<b>FACTs project name:</b>	Clinton Street	Form # ML1
<b>Date: Sept 4, 2007</b>		
<b>Reporting IH:</b>	Caoimhin P. Connell, Forensic IH	

**PROPERTY DESCRIPTION:**

Physical address	<b>1491 Clinton St. Aurora, CO</b>		
Legal description or VIN	<b>N 1/2 OF 46 ALL 47 &amp; 48 BLK 1 ANDERSONS ADD (Parcel Number 1973-03-2-03-017)</b>		
Registered Property Owner	<b>Johnson, Steven E 1491 Clinton St. Aurora, CO</b>		
Number of structures	<b>Two</b>		
Type of Structures (Each affected structure will need a "Functional Space" inventory)	1: Residence	2,940	Square feet
	2: Garage	348	Square feet
	3:		Square feet
	4:		Square feet
	5:		Square feet
	6:		Square feet
Adjacent and/ or surrounding properties	1: North: Light industry, retail		
	2: South: Residential		
	3: East: Light industry, retail		
	4: West: Retail		
	5:		
	6:		
General Property Observations	<b>Well kempt property with some damage due to recent vandalism. Appears to have new carpet, and fresh paint.</b>		
Presumed Production Method	<b>Smoking only</b>		

**PLUMBING INSPECTION AND INVENTORY**

<b>FACTs project name:</b>	Clinton Street	<b>Form # ML2</b>
<b>Date: Sept 4, 2007</b>		
<b>Reporting IH:</b>	Caoimhin P. Connell, Forensic IH	

Functional Space	Room	Fixture	Indicia?	Comments
3	Bathroom # 1	Bath	N	
3	Bathroom # 1	Shower	N	
3	Bathroom # 1	Sink	Y	Yellow staining
3	Bathroom # 1	Toilet	N	
	Bathroom #	Bath		
	Bathroom #	Shower		
	Bathroom #	Sink		
6	Bathroom #	Toilet	N	
4	Kitchen	Sink	N	
N/A	Slop sink		NA	
N/A	Washing machine		NA	
4	Dishwasher		N	

**VENTILATION INSPECTION AND INVENTORY**

Item	Y/N	Indicia ?	Sampled ?	Comments
Isolated AHU?	Y		NA	
Common air intake?	N		NA	
Common bathroom exhausts?	N		NA	
Forced air system?	Y		Y	
Steam heat?	N		NA	
Common ducts to other properties?	N		NA	
Passive plena to other properties?	N		NA	
Active returns to other properties?	N		NA	
Passive wall grilles to other properties?	N		NA	
Industrial ventilation?	N		NA	
Residential ventilation?	Y		Y	
Pressurized structure?	N		NA	

---



---



---



---



---



---



---



---



---



---



**FUNCTIONAL SPACE INVENTORY**

<b>FACTs project name:</b>	Clinton Street	Form # ML3
<b>Date:</b> Sept 4, 2007		
<b>Reporting IH:</b>	Caoimhin P. Connell, Forensic IH	

Structure Number	Functional Space Number	Indicia (Y/N)	Describe the functional space (include delineating structural features)
1	1	Y	Covered Porch
1	2	Y	Living room, Dining room and closet, Master Bedroom and closet
1	3	Y	Master bathroom
1	4	Y	Kitchen
1	5	Y	SW Bedroom
1	6	Y	Toilet room
1	7	Y	Mud room/ Utility room
1	8	Y	Basement
1	9	Y	Attic
1	10	N	Exterior grounds
2	1	N	Garage





**LAW ENFORCEMENT DOCUMENTATION**

<b>FACTs project name:</b>	Clinton Street	<b>Form # ML4</b>
<b>Date: Sept 4, 2007</b>		
<b>Reporting IH:</b>	Caoimhin P. Connell, Forensic IH	

Inventory of Reviewed Documents	1: Aurora PD "Call History" revealed no controlled substance related activities listed 2: Confidential police informants provided no further information on the property or past residents
Described method(s) of production	Smoking only
Chemicals identified by the LEA as being present	None identified _____ _____ _____ _____ _____ _____ _____ _____ _____
Cooking areas identified	Smoking probably occurred in the basement and in the kitchen
Chemical storage areas identified	None identified
LE Observation on areas of contamination or waste disposal	No LE observations applicable



## RELATED EVENTS FOR ADDRESS: 1491 N CLINTON ST

Type/Number	Date	Offense
CP 2007-200187	08/13/2007	SUSPICIOUS OCCURRENCE
CP 2007-198359	08/11/2007	DAMAGED PROPERTY
CP 2007-145419	06/15/2007	PARKING/NON-MOVING VIO
CP 2007-133805	06/02/2007	SUSPICIOUS OCCURRENCE
CP 2007-71320	03/24/2007	E911
CP 2006-131984	06/10/2006	PROPERTY FOUND
CP 2006-117955	05/25/2006	DAMAGED PROPERTY
CP 2006-68993	03/30/2006	WARRANT ARREST
CP 2006-5516	01/08/2006	CHECK BUSINESS/BUILDING
CP 2006-4688	01/07/2006	TRESPASS
CP 2005-282799	12/23/2005	SUSPICIOUS OCCURRENCE
CP 2005-279476	12/19/2005	BAR CHECK
CP 2005-277936	12/16/2005	WARRANT ARREST
CP 2005-277964	12/16/2005	WARRANT ARREST
CP 2005-274544	12/12/2005	CHECK BUSINESS/BUILDING
CP 2005-273350	12/10/2005	DRUNK
CP 2005-268447	12/03/2005	CHECK BUSINESS/BUILDING
CP 2005-268380	12/03/2005	FIRE ASSIST
CP 2005-48957	03/05/2005	CHECK BUSINESS/BUILDING
CP 2005-35530	02/16/2005	AREA WATCH
CP 2005-26000	02/04/2005	CHECK BUSINESS/BUILDING
CP 2005-21940	01/30/2005	CHECK BUSINESS/BUILDING
CP 2005-16465	01/23/2005	CHECK BUSINESS/BUILDING
CP 2005-15779	01/22/2005	DAMAGED PROPERTY

\*\* END OF RELATED EVENTS FOR ADDRESS REPORT \*\*

## RELATED EVENTS FOR ADDRESS: 1491 N CLINTON ST

Type/Number	Date	Offense
GO 2006-27634	06/10/2006	LOST/FOUND PROPERTY
GO 2006-15284	03/30/2006	OBSTRUCT JUD FAIL TO APPEAR
GO 2006-1099	01/07/2006	TRESPASS PREMISE/STRUCTURE
GO 2006-1282	01/08/2006	TRESPASS PREMISE/STRUCTURE
GO 2005-61385	12/16/2005	OBSTRUCT JUD FAIL TO APPEAR
GO 2005-60302	12/10/2005	DETOX
GO 2005-5008	01/30/2005	TRESPASS PREMISE/STRUCTURE
GO 2005-3637	01/22/2005	DAMAGED PROPERTY-PRIVATE

\*\* END OF RELATED EVENTS FOR ADDRESS REPORT \*\*

**FIELD OBSERVATIONS**

<b>FACTs project name:</b>	Clinton Street	<b>Form # ML5</b>
<b>Date: Sept 4, 2007</b>		
<b>Reporting IH:</b>	Caoimhin P. Connell, Forensic IH	

**Structure: 1**

**Functional Space: 1 Porch**

Item	Yes or Number	No	Item	Yes or Number	No
Acids		X	Heet or similar (MeOH)		X
Aerosol cans		X	Hydrogen peroxide		X
Alcohols (MeOH, EtOH)		X	Iodine		X
Ammonia		X	Kitty litter		X
Ammunition		X	Lead		X
Bags of salt		X	Lithium		X
Bases		X	Match components		X
Basters/Pipettes		X	Mercury		X
Batteries		X	Methamphetamine	X	
Bi-phasic wastes		X	Modified coolers		X
Booby traps (trips, triggers, etc)		X	Needles/Syringes		X
Bullet holes		X	Other OTC		X
Chemical storage		X	Phenyl-2-propanone		X
Corrosion on surfaces		X	Presence of cats		X
Colored wastes		X	Pseudoephedrine		X
Drug paraphernalia		X	Red P		X
Empty OTC Bottles		X	Solvents - ketones, etc		X
Ephedrine		X	Solvents -aromatics		X
Filters		X	Urine containers		X
Gas cylinders		X	Weapons		X
Gerry cans		X	Yellow staining		X
Glassware		X			

**Notes**

- ① Present but not as indicia
- ② Copious or unusual quantities
- ③ Present in normal household expectations
- ④ Modified in manner consistent with clanlab use



**FIELD OBSERVATIONS**

<b>FACTs project name:</b>	Clinton Street	<b>Form # ML5</b>
<b>Date: Sept 4, 2007</b>		
<b>Reporting IH:</b>	Caoimhín P. Connell, Forensic IH	

**Structure: 1**

**Functional Space: 2 Living room, Master bedroom, Dining room**

Item	Yes or Number	No	Item	Yes or Number	No
Acids		X	Heet or similar (MeOH)		X
Aerosol cans		X	Hydrogen peroxide		X
Alcohols (MeOH, EtOH)		X	Iodine		X
Ammonia		X	Kitty litter		X
Ammunition		X	Lead		X
Bags of salt		X	Lithium		X
Bases		X	Match components		X
Basters/Pipettes		X	Mercury		X
Batteries		X	Methamphetamine	X	
Bi-phasic wastes		X	Modified coolers		X
Booby traps (trips, triggers, etc)		X	Needles/Syringes		X
Bullet holes		X	Other OTC	①	
Chemical storage		X	Phenyl-2-propanone		X
Corrosion on surfaces		X	Presence of cats		X
Colored wastes		X	Pseudoephedrine		X
Drug paraphernalia		X	Red P		X
Empty OTC Bottles		X	Solvents - ketones, etc		X
Ephedrine		X	Solvents -aromatics		X
Filters		X	Urine containers		X
Gas cylinders		X	Weapons		X
Gerry cans		X	Yellow staining		X
Glassware		X			

**Notes**

- ① Present but not as indicia
- ② Copious or unusual quantities
- ③ Present in normal household expectations
- ④ Modified in manner consistent with clanlab use



**FIELD OBSERVATIONS**

<b>FACTs project name:</b>	Clinton Street	<b>Form # ML5</b>
<b>Date: Sept 4, 2007</b>		
<b>Reporting IH:</b>	Caoimhin P. Connell, Forensic IH	

**Structure: 1**

**Functional Space: 3 Master bathroom**

Item	Yes or Number	No	Item	Yes or Number	No
Acids		X	Heet or similar (MeOH)		X
Aerosol cans		X	Hydrogen peroxide		X
Alcohols (MeOH, EtOH)		X	Iodine		X
Ammonia		X	Kitty litter		X
Ammunition		X	Lead		X
Bags of salt		X	Lithium		X
Bases		X	Match components		X
Basters/Pipettes		X	Mercury		X
Batteries		X	Methamphetamine		X
Bi-phasic wastes		X	Modified coolers		X
Booby traps (trips, triggers, etc)		X	Needles/Syringes		X
Bullet holes		X	Other OTC		X
Chemical storage		X	Phenyl-2-propanone		X
Corrosion on surfaces		X	Presence of cats		X
Colored wastes		X	Pseudoephedrine		X
Drug paraphernalia		X	Red P		X
Empty OTC Bottles		X	Solvents - ketones, etc		X
Ephedrine		X	Solvents -aromatics		X
Filters		X	Urine containers		X
Gas cylinders		X	Weapons		X
Gerry cans		X	Yellow staining		X
Glassware		X			

**Notes**

- ① Present but not as indicia
- ② Copious or unusual quantities
- ③ Present in normal household expectations
- ④ Modified in manner consistent with clanlab use



**FIELD OBSERVATIONS**

<b>FACTs project name:</b>	Clinton Street	<b>Form # ML5</b>
<b>Date: Sept 4, 2007</b>		
<b>Reporting IH:</b>	Caoimhin P. Connell, Forensic IH	

**Structure: 1**

**Functional Space: 4 Kitchen**

Item	Yes or Number	No	Item	Yes or Number	No
Acids		X	Heet or similar (MeOH)		X
Aerosol cans		X	Hydrogen peroxide		X
Alcohols (MeOH, EtOH)		X	Iodine		X
Ammonia		X	Kitty litter		X
Ammunition		X	Lead		X
Bags of salt		X	Lithium		X
Bases		X	Match components		X
Basters/Pipettes		X	Mercury		X
Batteries		X	Methamphetamine	X	
Bi-phasic wastes		X	Modified coolers		X
Booby traps (trips, triggers, etc)		X	Needles/Syringes		X
Bullet holes		X	Other OTC		X
Chemical storage		X	Phenyl-2-propanone		X
Corrosion on surfaces		X	Presence of cats		X
Colored wastes		X	Pseudoephedrine		X
Drug paraphernalia		X	Red P		X
Empty OTC Bottles		X	Solvents - ketones, etc		X
Ephedrine		X	Solvents -aromatics		X
Filters		X	Urine containers		X
Gas cylinders		X	Weapons		X
Gerry cans		X	Yellow staining		X
Glassware		X			

**Notes**

- ① Present but not as indicia
- ② Copious or unusual quantities
- ③ Present in normal household expectations
- ④ Modified in manner consistent with clanlab use



**FIELD OBSERVATIONS**

<b>FACTs project name:</b>	Clinton Street	<b>Form # ML5</b>
<b>Date: Sept 4, 2007</b>		
<b>Reporting IH:</b>	Caoimhin P. Connell, Forensic IH	

**Structure: 1**

**Functional Space: 5 SW Bedroom**

Item	Yes or Number	No	Item	Yes or Number	No
Acids		X	Heet or similar (MeOH)		X
Aerosol cans		X	Hydrogen peroxide		X
Alcohols (MeOH, EtOH)		X	Iodine		X
Ammonia		X	Kitty litter		X
Ammunition		X	Lead		X
Bags of salt		X	Lithium		X
Bases		X	Match components		X
Basters/Pipettes		X	Mercury		X
Batteries		X	Methamphetamine		X
Bi-phasic wastes		X	Modified coolers		X
Booby traps (trips, triggers, etc)		X	Needles/Syringes		X
Bullet holes		X	Other OTC		X
Chemical storage		X	Phenyl-2-propanone		X
Corrosion on surfaces		X	Presence of cats		X
Colored wastes		X	Pseudoephedrine		X
Drug paraphernalia		X	Red P		X
Empty OTC Bottles		X	Solvents - ketones, etc		X
Ephedrine		X	Solvents -aromatics		X
Filters		X	Urine containers		X
Gas cylinders		X	Weapons		X
Gerry cans		X	Yellow staining		X
Glassware		X			

**Notes**

- ① Present but not as indicia
- ② Copious or unusual quantities
- ③ Present in normal household expectations
- ④ Modified in manner consistent with clanlab use





**FIELD OBSERVATIONS**

<b>FACTs project name:</b>	Clinton Street	<b>Form # ML5</b>
<b>Date: Sept 4, 2007</b>		
<b>Reporting IH:</b>	Caoimhin P. Connell, Forensic IH	

**Structure: 1**

**Functional Space: 6 Toilet room**

Item	Yes or Number	No	Item	Yes or Number	No
Acids		X	Heet or similar (MeOH)		X
Aerosol cans		X	Hydrogen peroxide		X
Alcohols (MeOH, EtOH)		X	Iodine		X
Ammonia		X	Kitty litter		X
Ammunition		X	Lead		X
Bags of salt		X	Lithium		X
Bases		X	Match components		X
Basters/Pipettes		X	Mercury		X
Batteries		X	Methamphetamine		X
Bi-phasic wastes		X	Modified coolers		X
Booby traps (trips, triggers, etc)		X	Needles/Syringes		X
Bullet holes		X	Other OTC		X
Chemical storage		X	Phenyl-2-propanone		X
Corrosion on surfaces		X	Presence of cats		X
Colored wastes		X	Pseudoephedrine		X
Drug paraphernalia		X	Red P		X
Empty OTC Bottles		X	Solvents - ketones, etc		X
Ephedrine		X	Solvents -aromatics		X
Filters		X	Urine containers		X
Gas cylinders		X	Weapons		X
Gerry cans		X	Yellow staining		X
Glassware		X			

**Notes**

- ① Present but not as indicia
- ② Copious or unusual quantities
- ③ Present in normal household expectations
- ④ Modified in manner consistent with clanlab use



**FIELD OBSERVATIONS**

<b>FACTs project name:</b>	Clinton Street	<b>Form # ML5</b>
<b>Date: Sept 4, 2007</b>		
<b>Reporting IH:</b>	Caoimhin P. Connell, Forensic IH	

**Structure: 1**

**Functional Space: 7 Mud room / Utility room**

Item	Yes or Number	No	Item	Yes or Number	No
Acids		X	Heet or similar (MeOH)		X
Aerosol cans		X	Hydrogen peroxide		X
Alcohols (MeOH, EtOH)		X	Iodine		X
Ammonia		X	Kitty litter		X
Ammunition		X	Lead		X
Bags of salt		X	Lithium		X
Bases		X	Match components		X
Basters/Pipettes		X	Mercury		X
Batteries		X	Methamphetamine		X
Bi-phasic wastes		X	Modified coolers		X
Booby traps (trips, triggers, etc)		X	Needles/Syringes		X
Bullet holes		X	Other OTC		X
Chemical storage		X	Phenyl-2-propanone		X
Corrosion on surfaces		X	Presence of cats		X
Colored wastes		X	Pseudoephedrine		X
Drug paraphernalia		X	Red P		X
Empty OTC Bottles		X	Solvents - ketones, etc		X
Ephedrine		X	Solvents -aromatics		X
Filters		X	Urine containers		X
Gas cylinders		X	Weapons		X
Gerry cans		X	Yellow staining		X
Glassware		X			

**Notes**

- ① Present but not as indicia
- ② Copious or unusual quantities
- ③ Present in normal household expectations
- ④ Modified in manner consistent with clanlab use



**FIELD OBSERVATIONS**

<b>FACTs project name:</b>	Clinton Street	<b>Form # ML5</b>
<b>Date: Sept 4, 2007</b>		
<b>Reporting IH:</b>	Caoimhin P. Connell, Forensic IH	

**Structure: 1**

**Functional Space: 8 Basement**

Item	Yes or Number	No	Item	Yes or Number	No
Acids		X	Heet or similar (MeOH)		X
Aerosol cans		X	Hydrogen peroxide		X
Alcohols (MeOH, EtOH)		X	Iodine		X
Ammonia		X	Kitty litter		X
Ammunition		X	Lead		X
Bags of salt		X	Lithium		X
Bases		X	Match components		X
Basters/Pipettes		X	Mercury		X
Batteries		X	Methamphetamine	X	
Bi-phasic wastes		X	Modified coolers		X
Booby traps (trips, triggers, etc)		X	Needles/Syringes		X
Bullet holes		X	Other OTC		X
Chemical storage		X	Phenyl-2-propanone		X
Corrosion on surfaces	X		Presence of cats		X
Colored wastes		X	Pseudoephedrine		X
Drug paraphernalia		X	Red P		X
Empty OTC Bottles		X	Solvents - ketones, etc		X
Ephedrine		X	Solvents -aromatics		X
Filters		X	Urine containers		X
Gas cylinders		X	Weapons		X
Gerry cans		X	Yellow staining		X
Glassware		X			

**Notes**

- ① Present but not as indicia
- ② Copious or unusual quantities
- ③ Present in normal household expectations
- ④ Modified in manner consistent with clanlab use



**FIELD OBSERVATIONS**

<b>FACTs project name:</b>	Clinton Street	<b>Form # ML5</b>
<b>Date: Sept 4, 2007</b>		
<b>Reporting IH:</b>	Caoimhin P. Connell, Forensic IH	

**Structure: 1**

**Functional Space: 9 Attic**

Item	Yes or Number	No	Item	Yes or Number	No
Acids		X	Heet or similar (MeOH)		X
Aerosol cans		X	Hydrogen peroxide		X
Alcohols (MeOH, EtOH)		X	Iodine		X
Ammonia		X	Kitty litter		X
Ammunition		X	Lead		X
Bags of salt		X	Lithium		X
Bases		X	Match components		X
Basters/Pipettes		X	Mercury		X
Batteries		X	Methamphetamine		X
Bi-phasic wastes		X	Modified coolers		X
Booby traps (trips, triggers, etc)		X	Needles/Syringes		X
Bullet holes		X	Other OTC		X
Chemical storage		X	Phenyl-2-propanone		X
Corrosion on surfaces		X	Presence of cats		X
Colored wastes		X	Pseudoephedrine		X
Drug paraphernalia		X	Red P		X
Empty OTC Bottles		X	Solvents - ketones, etc		X
Ephedrine		X	Solvents -aromatics		X
Filters		X	Urine containers		X
Gas cylinders		X	Weapons		X
Gerry cans		X	Yellow staining		X
Glassware		X			

**Notes**

- ① Present but not as indicia
- ② Copious or unusual quantities
- ③ Present in normal household expectations
- ④ Modified in manner consistent with clanlab use



**FIELD OBSERVATIONS**

<b>FACTs project name:</b>	Clinton Street	<b>Form # ML5</b>
<b>Date: Sept 4, 2007</b>		
<b>Reporting IH:</b>	Caoimhin P. Connell, Forensic IH	

**Structure:**

**Functional Space: 10 Exterior Grounds**

Item	Yes or Number	No	Item	Yes or Number	No
Acids		X	Heet or similar (MeOH)		X
Aerosol cans		X	Hydrogen peroxide		X
Alcohols (MeOH, EtOH)		X	Iodine		X
Ammonia		X	Kitty litter		X
Ammunition		X	Lead		X
Bags of salt		X	Lithium		X
Bases		X	Match components		X
Basters/Pipettes		X	Mercury		X
Batteries		X	Methamphetamine		X
Bi-phasic wastes		X	Modified coolers		X
Booby traps (trips, triggers, etc)		X	Needles/Syringes		X
Bullet holes		X	Other OTC		X
Chemical storage		X	Phenyl-2-propanone		X
Corrosion on surfaces		X	Presence of cats		X
Colored wastes		X	Pseudoephedrine		X
Drug paraphernalia		X	Red P		X
Empty OTC Bottles		X	Solvents - ketones, etc		X
Ephedrine		X	Solvents -aromatics		X
Filters		X	Urine containers		X
Gas cylinders		X	Weapons		X
Gerry cans		X	Yellow staining		X
Glassware		X			

**Notes**

- ① Present but not as indicia
- ② Copious or unusual quantities
- ③ Present in normal household expectations
- ④ Modified in manner consistent with clanlab use



**FIELD OBSERVATIONS**

<b>FACTs project name:</b>	Clinton Street	<b>Form # ML5</b>
<b>Date: Sept 4, 2007</b>		
<b>Reporting IH:</b>	Caoimhin P. Connell, Forensic IH	

**Structure: 2**

**Functional Space: 1 Garage**

Item	Yes or Number	No	Item	Yes or Number	No
Acids		X	Heet or similar (MeOH)		X
Aerosol cans	①		Hydrogen peroxide		X
Alcohols (MeOH, EtOH)		X	Iodine		X
Ammonia		X	Kitty litter		X
Ammunition		X	Lead		X
Bags of salt		X	Lithium		X
Bases		X	Match components		X
Basters/Pipettes		X	Mercury		X
Batteries		X	Methamphetamine		X
Bi-phasic wastes		X	Modified coolers		X
Booby traps (trips, triggers, etc)		X	Needles/Syringes		X
Bullet holes		X	Other OTC		X
Chemical storage	①		Phenyl-2-propanone		X
Corrosion on surfaces		X	Presence of cats		X
Colored wastes		X	Pseudoephedrine		X
Drug paraphernalia		X	Red P		X
Empty OTC Bottles		X	Solvents - ketones, etc		X
Ephedrine		X	Solvents -aromatics		X
Filters		X	Urine containers		X
Gas cylinders		X	Weapons		X
Gerry cans	①		Yellow staining		X
Glassware		X			

**Notes**

- ① Present but not as indicia
- ② Copious or unusual quantities
- ③ Present in normal household expectations
- ④ Modified in manner consistent with clanlab use



**INDIVIDUAL SEWAGE DISPOSAL SYSTEM FIELD FORM**

<b>FACTs project name:</b>	Clinton Street	<b>Form #</b> ML7
<b>Date:</b>	Sept 4, 2007	
<b>Reporting IH:</b>	Caoimhin P. Connell, Forensic IH	

	Yes	No	N/C
Does the property have an ISDS		X	
Is there unusual staining around internal drains		X	
Are solvent odors present from the internal drains		X	
Are solvent odors present from the external sewer drain stacks			X
Was the septic tank lid(s) accessible	NA		
Was the leach field line accessible			
Was the septic tank or leach field lines opened			
Are solvent odors present from the leach field lines (if "yes" see below)			
Are solvent odors present from the septic tank (if "yes" see below)			
Is "slick" present in the septic tank			
Are biphasic (aqueous-organic) layers present in the septic tank			
Was pH measured in the septic tank			
Were organic vapours measured in the septic tank (if "yes" see below)			
Is there evidence of wastes being disposed down internal drains			
Is sampling of the ISDS warranted	NA		
Were calawasi/drum thief samples collected from the septic tank			

\*NC = Not checked

**Qualitative Organic Vapor Monitoring**

Photo ionization detector model	NA
Photo ionization lamp E (in Ev)	
Photo ionization Calibration	
Flame ionization detector model	
Flame ionization Calibration	

Location	PID*	FID*

\*Units of measurement are in parts per million equivalents compared to the calibration vapor.



**PRE-REMEDATION PHOTOGRAPH LOG SHEET (PAGE 1 OF 2)**

<b>FACTs project name:</b>	<b>Clinton Street</b>	<b>Form # ML8</b>
<b>Date: Sept 4, 2007</b>		
<b>Reporting IH:</b>	<b>Caoimhín P. Connell, Forensic IH</b>	

Name ^	Date Picture Taken	Name ^	Date Picture Taken	Name ^	Date Picture Taken
Attic 1	8/23/2007 12:56	Garage 1	8/23/2007 13:21	Mud Room 5	8/23/2007 11:45
Attic 2	8/23/2007 12:56	Garage 2	8/23/2007 13:21	Mud Room 6	8/23/2007 11:34
Attic 3	8/23/2007 12:56	Garage 3	8/23/2007 13:21	Porch 1	8/23/2007 11:39
Attic 4	8/23/2007 12:56	Garage 4	8/23/2007 13:22	Porch 2	8/23/2007 11:39
Attic 5	8/23/2007 12:56	Garage 5	8/23/2007 13:22	Porch 3	8/23/2007 11:39
Attic 6	8/23/2007 12:56	Garage 6	8/23/2007 13:22	Sample No 1	8/23/2007 13:44
Attic 7	8/23/2007 12:56	Kitchen 1	8/23/2007 11:42	Sample No 2	8/23/2007 13:50
Attic 8	8/23/2007 12:57	Kitchen 2	8/23/2007 11:42	Sample No 3	8/23/2007 13:52
Attic 9	8/23/2007 12:57	Kitchen 3	8/23/2007 11:42	Sample No 4	8/23/2007 13:55
Basement 1	8/23/2007 13:01	Kitchen 4	8/23/2007 11:42	Sample No 5	8/23/2007 13:57
Basement 2	8/23/2007 13:01	Kitchen 5	8/23/2007 11:43	Sample No 5a	8/23/2007 13:58
Basement furnace	8/23/2007 14:13	Kitchen 6	8/23/2007 11:46	Sample No 6	8/23/2007 14:00
Dining Room 1	8/23/2007 11:40	Kitchen 7	8/23/2007 13:25	Sample No 6a	8/23/2007 14:00
Dining Room 2	8/23/2007 11:40	Kitchen 8	8/23/2007 11:44	Sample No 6b	8/23/2007 14:03
Dining Room 3	8/23/2007 11:40	Kitchen 9	8/23/2007 14:23	Sample No 8	8/23/2007 14:06
Dining Room 4	8/23/2007 11:40	Living Room 1	8/23/2007 11:33	Sample No 9	8/23/2007 14:15
Exterior 1	8/23/2007 11:23	Living Room 2	8/23/2007 11:40	Porch 1	8/23/2007 11:39
Exterior 2	8/23/2007 11:25	Living Room 3	8/23/2007 11:39	Porch 2	8/23/2007 11:39
Exterior 3	8/23/2007 11:39	Living Room 4	8/23/2007 11:39	Porch 3	8/23/2007 11:39
Exterior 4	8/23/2007 14:20	Living Room 5	8/23/2007 11:40	Sample No 1	8/23/2007 13:44
Exterior 5	8/23/2007 14:20	Living Room 6	8/23/2007 11:40	Sample No 2	8/23/2007 13:50
Exterior 6	8/23/2007 14:20	Living Room 7	8/23/2007 11:40	Sample No 3	8/23/2007 13:52
Exterior 7	8/23/2007 14:29	Living Room 8	8/23/2007 11:42	Sample No 4	8/23/2007 13:55
Exterior 8	8/23/2007 14:30	Master bath 1	8/23/2007 11:43	Sample No 5	8/23/2007 13:57
Exterior 9	8/23/2007 14:31	Master bath 2	8/23/2007 11:43	Sample No 5a	8/23/2007 13:58
Exterior 10	8/23/2007 14:31	Master bath 3	8/23/2007 11:43	Sample No 6	8/23/2007 14:00
Exterior 11	8/23/2007 14:31	Master Bed 1	8/23/2007 11:42	Sample No 6a	8/23/2007 14:00
Exterior 12	8/23/2007 14:31	Master Bed 2	8/23/2007 11:42	Sample No 6b	8/23/2007 14:03
Exterior 13	8/23/2007 14:31	Master Bed 3	8/23/2007 11:42	Sample No 8	8/23/2007 14:06
Exterior 14	8/23/2007 14:32	Master Bed 4	8/23/2007 11:42	Sample No 9	8/23/2007 14:15
Exterior 15	8/23/2007 14:32	Mud Room 1	8/23/2007 11:44	Sample No 9a	8/23/2007 14:14
Exterior 16	8/23/2007 14:32	Mud Room 2	8/23/2007 11:44	Sample No 10	8/23/2007 14:18
Exterior 17	8/23/2007 14:32	Mud Room 3	8/23/2007 11:45	Surroundings 1	8/23/2007 14:29
Exterior 18	8/23/2007 14:33	Mud Room 4	8/23/2007 11:45	Surroundings 2	8/23/2007 14:29














**PRE-REMEDIATION PHOTOGRAPH LOG SHEET (PAGE 2 OF 2)**

<b>FACTs project name:</b>	Clinton Street	Form # ML8
<b>Date: Sept 4, 2007</b>		
<b>Reporting IH:</b>	Caoimhin P. Connell, Forensic IH	

**Photographs**




Name ^	Date Picture Taken
 Surroundings 3	8/23/2007 14:30
 Surroundings 4	8/23/2007 14:30
 SW Bedroom 1	8/23/2007 11:43
 SW Bedroom 2	8/23/2007 11:43
 SW Bedroom 3	8/23/2007 11:43
 SW Bedroom 4	8/23/2007 11:34
 Toilet Room 1	8/23/2007 11:44
 Toilet Room 2	8/23/2007 11:44
 Toilet Room 3	8/23/2007 11:44



**CERTIFICATION, VARIATIONS AND SIGNATURE SHEET**

<b>FACTs project name:</b>	Clinton Street	Form # ML14
<b>Date:</b>	Sept 4, 2007	
<b>Reporting IH:</b>	Caoimhin P. Connell, Forensic IH	

Certification

Statement	Signature
I do hereby certify that I conducted a preliminary assessment of the subject property in accordance with 6 CCR 1014-3, § 4.	
<del>I do hereby certify that the property has been decontaminated in accordance with the procedures set forth in 6 CCR 1014-3, § 5.</del>	XXXXXXXXXXXXXXXXXX
<del>I do hereby certify that I conducted post decontamination clearance sampling in accordance with 6 CCR 1014-3, § 6.</del>	XXXXXXXXXXXXXXXXXX
I do hereby certify that the cleanup standards established by 6 CCR 1014-3, § 7 have been met as evidenced by testing I conducted.	
I do hereby certify that the analytical results reported here are faithfully reproduced.	

In the section below, describe any variations from the standard.

No Variations

---

---

---

---

---

---

---

---

---

---

---

---

**Pursuant to the language required in 6 CCR 1014-3, § 8:**

~~I do hereby certify that I conducted a preliminary assessment of the subject property in accordance with 6 CCR 1014-3, § 4, and that I conducted post decontamination clearance sampling in accordance with 6 CCR 1014-3, § 6. I further certify that the property has been decontaminated in accordance with the procedures set forth in 6 CCR 1014-3, § 5, and that the cleanup standards established by 6 CCR 1014-3, § 7 have been met as evidenced by testing I conducted.~~

Signature \_\_\_\_\_ Date: \_\_\_\_\_

**OR**

I do hereby certify that I conducted a preliminary assessment of the subject property in accordance with 6 CCR 1014-3, § 4. I further certify that the cleanup standards established by 6 CCR 1014-3, § 7 have been met as evidenced by testing I conducted.

Signature:  Date: September 4, 2007



### FINAL DOCUMENTATION CHECKLIST

<b>FACTs project name:</b>	Clinton Street	Form # ML16
<b>Date:</b>	Sept 4, 2007	
<b>Reporting IH:</b>	Caoimhin P. Connell, Forensic IH	

DOCUMENT	Included
FACTs Property description field form	<i>CF</i>
FACTs Functional space inventory field form	<i>CF</i>
FACTs Law Enforcement documentation field form	<i>CF</i>
FACTs Field Observations field form	<i>CF</i>
FACTs Contamination migration field form	Report
FACTs ISDS field form	<i>CF</i>
FACTs Pre-remediation photographs	<i>CF</i>
FACTs <del>Post-remediation</del> photographs	NA
FACTs Pre-remediation photograph log sheet field form	<i>CF</i>
FACTs <del>Post-remediation</del> photograph log sheet field form	NA
FACTs Drawing of Cook area(s)	<i>CF</i>
FACTs Drawing of Storage area(s)	<i>CF</i>
FACTs Drawing of Waste area(s)	<i>CF</i>
FACTs Drawing General site	<i>CF</i>
FACTs description sampling procedures, handling, and QA/QC	<i>CF</i>
FACTs drawing of final sample locations?	<i>CF</i>
FACTs health and safety procedures used in accordance with OSHA	<i>CF</i>
FACTs post-decontamination samples locations	<i>CF</i>
FACTs Analytical Laboratory Documentation Form	<i>CF</i>
FACTs SOQs	<i>CF</i>
FACTs Certification of procedures, results, and variations from standard practices.	<i>CF</i>
Analytical Laboratory Reports	<i>CF</i>
Available Law Enforcement documents	<i>CF</i>
Plumbing inspection field form (plumbing system integrity and identification of sewage disposal mechanism)	<i>CF</i>
Contractor's description of the decontamination procedures used and a description of each area that was decontaminated	NA
Identification of common ventilation systems with adjacent units or common areas.	<i>CF</i>
A description of the analytical methods used and laboratory QA/QC requirements.	<i>CF</i>
Contractor's description of the removal procedures used and a description of areas where removal was conducted, and the materials removed.	NA
Contractor's description of the encapsulation procedures used and a description of the areas and/or materials where encapsulation was performed.	NA
Contractor's description of the waste management procedures used, including handling and final disposition of wastes.	NA



**FINAL SAMPLING CHECKLIST**

<b>FACTs project name:</b>	<b>Clinton Street</b>	<b>Form # ML18</b>
<b>Date: Sept 4, 2007</b>		
<b>Reporting IH:</b>	<b>Caoimhin P. Connell, Forensic IH</b>	

Functional Space #	Collected a minimum of 500 cm <sup>2</sup>		General Sampling Considerations	
	Yes	No		
1/1	X		Floor Space Area of Lab (ft <sup>2</sup> )	<b>3,289</b>
1/2	X		One extra sample is required for every 500 ft <sup>2</sup> of floor space >1,500ft <sup>2</sup> . Enter number of extra samples required:	<b>4</b>
1/3	X			
1/4	X			
1/5	X			
1/6	X		Collected minimum of 500 cm <sup>2</sup> per functional space?	<b>Y</b>
1/6	X		Collected minimum of 1,000 cm <sup>2</sup> surface area from the lab?	<b>Y</b>
1/7	X		Collected a minimum of 5 samples from the lab?	<b>Y</b>
1/8	X		Collected a minimum of 3 discrete samples from the lab?	<b>Y</b>
1/9	X		Is the lab a motor vehicle?	<b>N</b>
1/10	X		Does the lab contain motor vehicles?	<b>N</b>
2/1	X		Enter number of motor vehicles associated with the lab:	<b>0</b>
			Are the vehicles considered functional spaces of the lab?	<b>NA</b>
			For vehicles that are merely functional spaces, one extra 500 cm <sup>2</sup> sample is required for each vehicle. Enter the number of extra samples for functional space vehicles:	<b>0</b>
			Enter number of large vehicles (campers, trailers, etc)	<b>0</b>
			One extra sample is required for every 50 ft <sup>2</sup> of floor space of large vehicles. Enter number of extra samples required:	<b>0</b>
			One BX included for each 10 samples?	<b>Y</b>
			Sketch of the sample locations performed?	<b>Y</b>



## **APPENDIX B**

### **ANALYTICAL REPORTS FOR FACTS SAMPLES**

**SAMPLING FIELD FORM**

FACTs project name: 1491 Clinton Form # ML17  
 Date: 8/23/07 Alcohol Lot#: \_\_\_\_\_ Gauze Lot#: \_\_\_\_\_  
 Reporting IH: Caoimhin P. Connell, Forensic IH Preliminary  Intermediate \_\_\_\_\_ Final \_\_\_\_\_

Sample ID	Type	Area/ Volume/ Weight	Location	Func. Space	Dimensions	Substrate	Result
<u>QW082307</u>							
<u>01</u>	<u>W</u>		<u>Chaired Porch</u>	<u>1-1</u>	<u>9x9</u>	<u>PTD WOOD</u>	
<u>02</u>	<u>W</u>		<u>*Living Rm/Kt Bed/Master Bed</u>	<u>1-2</u>	<u>9x9</u>	<u>PTD WOOD</u>	
<u>03</u>	<u>W</u>		<u>Master Bath - wall</u>	<u>1-3-5</u>	<u>9x9</u>	<u>PTD Drywall</u>	
<u>04</u>	<u>W</u>		<u>Kitchen-CABINET</u>	<u>1-4-6</u>	<u>9x9</u>	<u>WOOD</u>	
<u>05</u>	<u>W</u>		<u>SW Bedroom/inside closet</u>	<u>1-5-7</u>	<u>13 x 12</u>	<u>PTD WOOD</u>	
<u>06</u>	<u>W</u>		<u>Toilet Room</u>	<u>1-4-8</u>	<u>9x9</u>	<u>PTD Plaster/ATH</u>	
<u>07</u>			<u>Blenx</u>				
<u>08</u>	<u>W</u>		<u>MD ROOM</u>	<u>1-9</u>	<u>9x9</u>	<u>PTD PIST/MATH</u>	
<u>09</u>	<u>W</u>		<u>BASEMENT/ TOP OF FURN. ARM</u>	<u>1-10</u>	<u>9x9</u>	<u>METAL</u>	
<u>10</u>	<u>W</u>		<u>* GARAGE/ TOP OF WASH SHELF</u>	<u>2-1</u>	<u>9x9</u>	<u>COMP. FEIT</u>	
<u>11</u>	<u>W</u>		<u>FURNACE - INTERIOR</u>		<u>6 1/2 x 6 1/2</u>	<u>M.F.TAL</u>	

Sample Types: W=Wipe; V=Microvacuum; A=Air; B=Bulk; L=Liquid

\* BASEBOARD

\* WOOD SAMPLED BY 50%



# ANALYTICAL CHEMISTRY INC.

Established in 1979

4611 S. 134th Place, Ste 200  
Tukwila WA 98168-3240  
Phone: 206-622-8353  
Fax: 206-622-4623

E-mail: aci@acilabs.com

Website: www.acilabs.com

<b>Lab Reference:</b>	07156-05
<b>Date Received:</b>	August 16, 2007
<b>Date Completed:</b>	August 17, 2007

August 17, 2007

CAOIMHIN P CONNELL  
FORENSIC APPLICATIONS INC  
185 BOUNTY HUNTER'S LN  
BAILEY CO 80421

**CLIENT REF:** Clinton

**SAMPLES:** wipes/2

**ANALYSIS:** Methamphetamine by Gas Chromatography-Mass Spectrometry.

**RESULTS:** in total micrograms (ug)

<b>Sample</b>	<b>Methamphetamine, ug</b>	<b>% Surrogate Recovery</b>
CM081507 - 01	0.777	100
CM081507 - 02	< 0.030	101
QA/QC Method Blank	< 0.004	
QC 0.100 ug Standard	0.095	
QA 0.020 ug Matrix Spike	0.019	
QA 0.020 ug Matrix Spike Duplicate	0.018	
Method Detection Limit (MDL)	0.004	
Practical Quantitation Limit (PQL)	0.030	

'<': less than, not detected above the PQL

Robert M. Orheim  
Director of Laboratories



# ANALYTICAL CHEMISTRY INC.

Established in 1979

4611 S. 134th Place, Ste 200  
Tukwila WA 98168-3240  
Phone: 206-622-8353  
Fax: 206-622-4623

E-mail: aci@acilabs.com

Website: www.acilabs.com

<b>Lab Reference:</b>	07158-07
<b>Date Received:</b>	August 24, 2007
<b>Date Completed:</b>	August 28, 2007

August 28, 2007

CAOIMHIN P CONNELL  
FORENSIC APPLICATIONS INC  
185 BOUNTY HUNTER'S LN  
BAILEY CO 80421

**CLIENT REF:** Clinton

**SAMPLES:** wipes/11

**ANALYSIS:** Methamphetamine by Gas Chromatography-Mass Spectrometry.

**RESULTS:** in total micrograms (ug)

<b>Sample</b>	<b>Methamphetamine, ug</b>	<b>% Surrogate Recovery</b>
CM082307 - 01	0.049	93
CM082307 - 02	< 0.030	93
CM082307 - 03	< 0.030	98
CM082307 - 04	0.046	94
CM082307 - 05	< 0.030	96
CM082307 - 06	< 0.030	97
CM082307 - 07	0.042	96
CM082307 - 08	< 0.030	98
CM082307 - 09	0.130	96
CM082307 - 10	< 0.030	84
CM082307 - 11	0.051	100
QA/QC Method Blank	< 0.004	
QC 0.100 ug Standard	0.098	
QA 0.020 ug Matrix Spike	0.020	
QA 0.020 ug Matrix Spike Duplicate	0.018	
Method Detection Limit (MDL)	0.004	
Practical Quantitation Limit (PQL)	0.030	

'<': less than, not detected above the PQL

Robert M. Orheim  
Director of Laboratories





# ANALYTICAL CHEMISTRY INC.

# CDL SAMPLING & CUSTODY FORM

4611 S 134th Pl, Ste 200 Tukwila WA 98168-3240  
Website: www.acliabs.com

Phone: 206-622-8353  
FAX: 206-622-4623

Page 1 of 1  
Please do not write in shaded areas.

<b>SAMPLING DATE:</b> 8/23/2007	<b>REPORT TO:</b> Caoimhin P. Connell	<b>ANALYSIS REQUESTED</b>
<b>PROJECT Name/No:</b> <u>Alston</u>	<b>COMPANY:</b> Forensic Applications, Inc.	1 Methamphetamine
<b>eMail:</b> Fiosrach@aol.com	<b>ADDRESS:</b> 185 Bounty Hunters Lane, Bailey, CO 80421	2 Use entire contents
<b>SAMPLER NAME:</b> Caoimhin P. Connell	<b>PHONE:</b> 303-903-7494	3
		4
		5
		6 Not Submitted

LAB Number	Sample Number	SAMPLE MATRIX			ANALYSIS REQUESTS						SAMPLER COMMENTS	LAB COMMENTS	No of Containers	
		Wipe	Vacuum	Other	1	2	3	4	5	6				
	QM082307-01	W			X	X								1
	QM082307 02				X	X								1
	QM082307 03				X	X								1
	QM082307 04				X	X								1
	QM082307 05				X	X								1
	QM082307 06				X	X								1
	QM082307 07				X	X								1
	QM082307 08				X	X								1
	QM082307 09				X	X								1
	QM082307 10				X	X								1
	QM082307 11				X	X								1

### CHAIN OF CUSTODY RECORD

Wipes Results in:

µg/100cm<sup>2</sup>

Total µg

Total Number of Containers (verified by laboratory) 11

<b>PRINT NAME</b>	<b>Signature</b>	<b>COMPANY</b>	<b>DATE</b>	<b>TIME</b>	<b>Turnaround Time</b>	<b>Custody Seals:</b>	<b>Yes</b>	<b>No</b>
Caoimhin P. Connell	<i>[Signature]</i>	FACTS, Inc.	8/23/07	15:19	<input type="checkbox"/> 24 Hours (2X)	Intact	<input checked="" type="checkbox"/>	Broken
MIA SAZON	<i>[Signature]</i>	ACT	8/24/07	1400	<input type="checkbox"/> 2 Days (1.75X)	Ambient	<input checked="" type="checkbox"/>	Cooled
					<input type="checkbox"/> 3 Days (1.5X)	Inspected By:		
					<input checked="" type="checkbox"/> Routine	Lab File No.		



# ANALYTICAL CHEMISTRY INC.

## CDL SAMPLING & CUSTODY FORM

4611 S 134th Pl, Ste 200 Tukwila WA 98168-3240  
 Website: www.acliabs.com

Phone: 206-622-8353  
 FAX: 206-622-4623

Page 1 of 1  
 Please do not write in shaded areas.

**SAMPLING DATE:** 8/15/2007 **REPORT TO:** Caoimhin P. Connell **ANALYSIS REQUESTED**

**PROJECT Name/No:** Clinton **COMPANY:** Forensic Applications, Inc. **ANALYSIS REQUESTED**

**eMail:** Fiostrach@aol.com **ADDRESS:** 185 Bounty Hunters Lane, Bailey, CO 80421 **ANALYSIS REQUESTED**

**SAMPLER NAME:** Caoimhin P. Connell **PHONE:** 303-903-7494 **ANALYSIS REQUESTED**

1 Methamphetamine  
 2 Use entire contents  
 3  
 4  
 5  
 6 Not Submitted

LAB Number	Sample Number	SAMPLE MATRIX			ANALYSIS REQUESTS						SAMPLER COMMENTS	LAB COMMENTS	No of Containers	
		Wipe	Vacuum	Other	1	2	3	4	5	6				
	CMØ815Ø7-Ø1 -Ø2	X			X	X								1
					X									
					X									
					X									
					X									
					X									
					X									
					X									
					X									
					X									
					X									
					X									
					X									

**CHAIN OF CUSTODY RECORD** Wipes Results in:  µg/100cm<sup>2</sup>  Total µg

**PRINT NAME** Signature **COMPANY** FACTS, Inc. **DATE** 8/15/07 **TIME** 0945 **Turnaround Time**  24 Hours (2X)  2 Days (1.75X)  3 Days (1.5X)  Routine

**MIA SAZON** **Signature** **ACI** **8/16/07** **1500** **Temporature:** **Ambien** **Inspected By:** **MIA SAZON** **Lab File No.** 07156-05

**Custody Seals:**  Yes  No

**Container:**  Intact  Broken

**Temperature:**  Ambient  Cooled

**APPENDIX C**  
**COMPACT DIGITAL DISC (CD)**